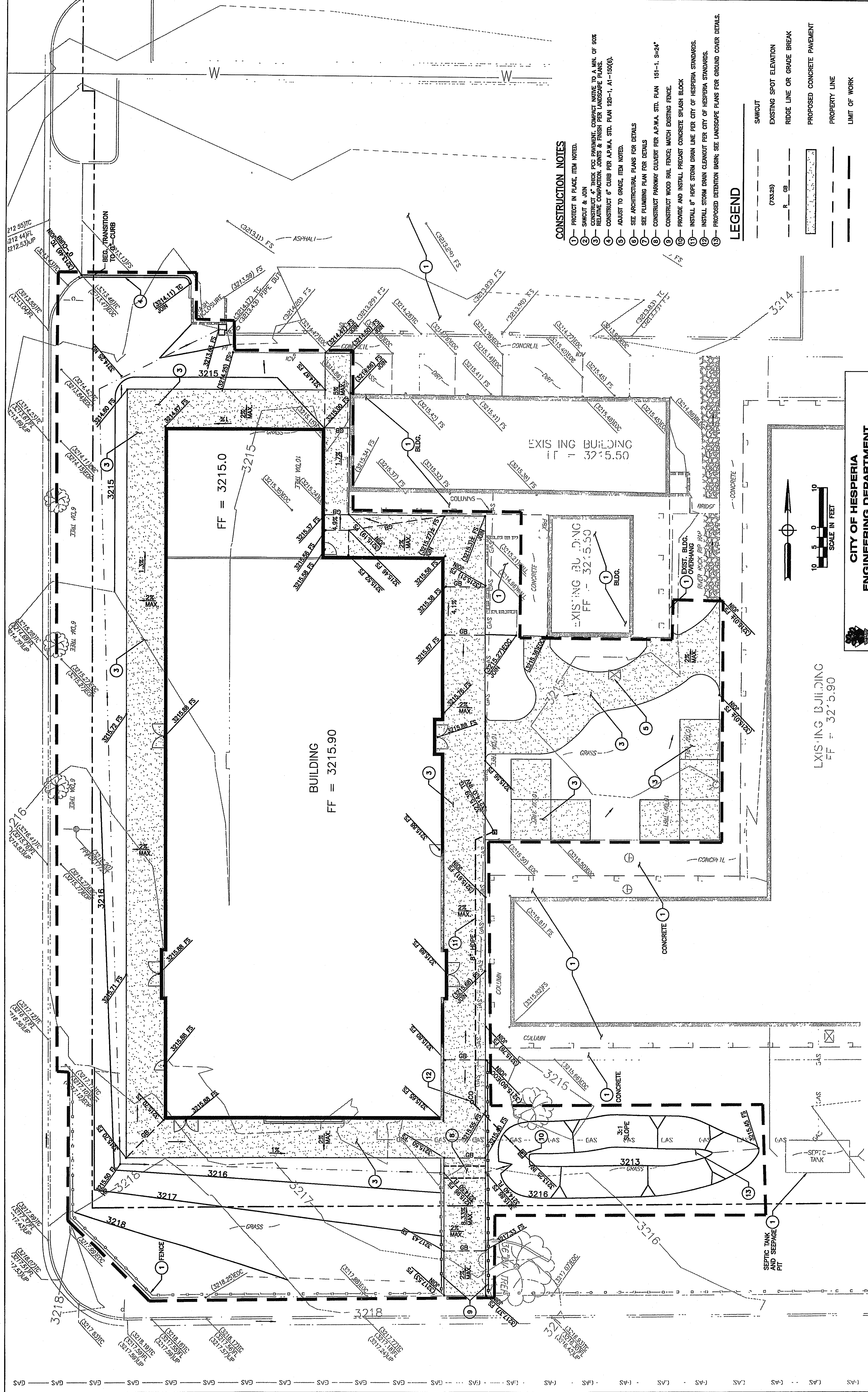


WEISER IRON
MAR 30 2007
RECEIVED



CONSTRUCTION NOTES

1. PROTECT IN PLACE, ITEM NOTED.
2. SAWCUT & JOIN
3. EXISTING CONC. WITH PCC REPAIRS, COMPACT NOT TO A MIN. OF 80%
4. EXISTING CONC. WITH PCC REPAIRS, COMPACT NOT TO A MIN. OF 80%
5. CONSTRUCT 6" CURB PER A.P.W.A. STD. PLAN 120-1, A1-15(0).
6. ADJUST TO GRADE, ITEM NOTED.
7. SEE ARCHITECTURAL PLANS FOR DETAILS
8. CONSTRUCT PARAWAY CURB PER A.P.W.A. STD. PLAN 151-1, S-24"
9. CONSTRUCT WOOD RAIL FENCE, MATCH EXISTING FENCE.
10. PROVIDE AND INSTALL PRECAST CONCRETE SPLASH BLOCK
11. INSTALL 8" HOPE STORM DRAIN LINE PER CITY OF HESPERIA STANDARDS.
12. INSTALL STORM DRAIN CLEANOUT PER CITY OF HESPERIA STANDARDS.
13. PROPOSED DETENTION BASIN, SEE LANDSCAPE PLANS FOR GROUND COVER DETAILS.

LEGEND

- SAWCUT
- EXISTING SPOT ELEVATION (733.25)
- RIDGE LINE OR GRADE BREAK
- PROPOSED CONCRETE PAVEMENT
- PROPERTY LINE
- LIMIT OF WORK

<p>CITY OF HESPERIA ENGINEERING DEPARTMENT</p>		<p>APPROVED BY: JOHN R. LEBELLE DATE: 9/20/05 R.C.E. 61804 EXP. DATE 9/20/05 CITY ENGINEER</p>
<p>RECOMMENDED FOR APPROVAL BY:</p>		<p>FILE No. GRADING PLAN</p>
<p>PREPARED BY: IKI IKE Consulting Engineers</p>		<p>DRAWING No. C-4 SH. 4 OF 5</p>
<p>SUBMITTED BY:</p>		<p>CALVARY CHAPEL OF THE HIGH DESERT LOTS 483-484, TRACT 4835 APN: 408-152-37-000</p>
<p>DESIGNED BY:</p>		
<p>DRAWN BY:</p>		
<p>CHECKED BY:</p>		
PLAN CHECK SUBMITTAL	BY	DATE
REVISION	DESCRIPTION	DATE