

TOVEY SHULTZ CONSTRUCTION INC.  
18251 COLLIER AVE. SUITE "A"  
TOWSON, CA 94555  
PHONE (909)471-5577  
FAX (909)471-5547

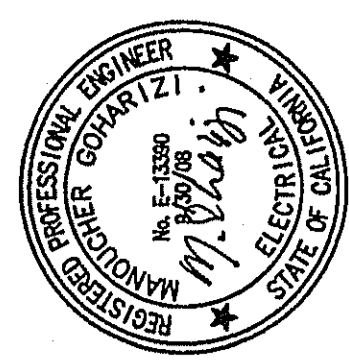
DESIGN/BUILD

CONSULTANT

**Brian R. Bloom**  
Architect  
399 S. Milliken Ave., Ste. G, Orange, CA 92667-2860  
(949) 396-7269  
ARCHITECTURE AND PLANNING



**Kocher Shariha Goharizadeh**  
Consulting Engineers, Inc.  
111 N. JORDAN STREET, ORANGE, CA 92667-4201  
PHONE (949) 851-1111  
FAX (949) 851-1111



PROJECT  
**CALVARY CHAPEL  
OF THE HIGH DESERT  
14740 EUCALYPTUS  
HESPERIA, CA  
92345**

PROJECT  
**FELLOWSHIP HALL**

ISSUANCES  
OWNERS MEETING 03-08-04  
PLANNING REVIEW 05-01-06  
PLANCHICK SUBMITTAL 03-23-07

REVISIONS

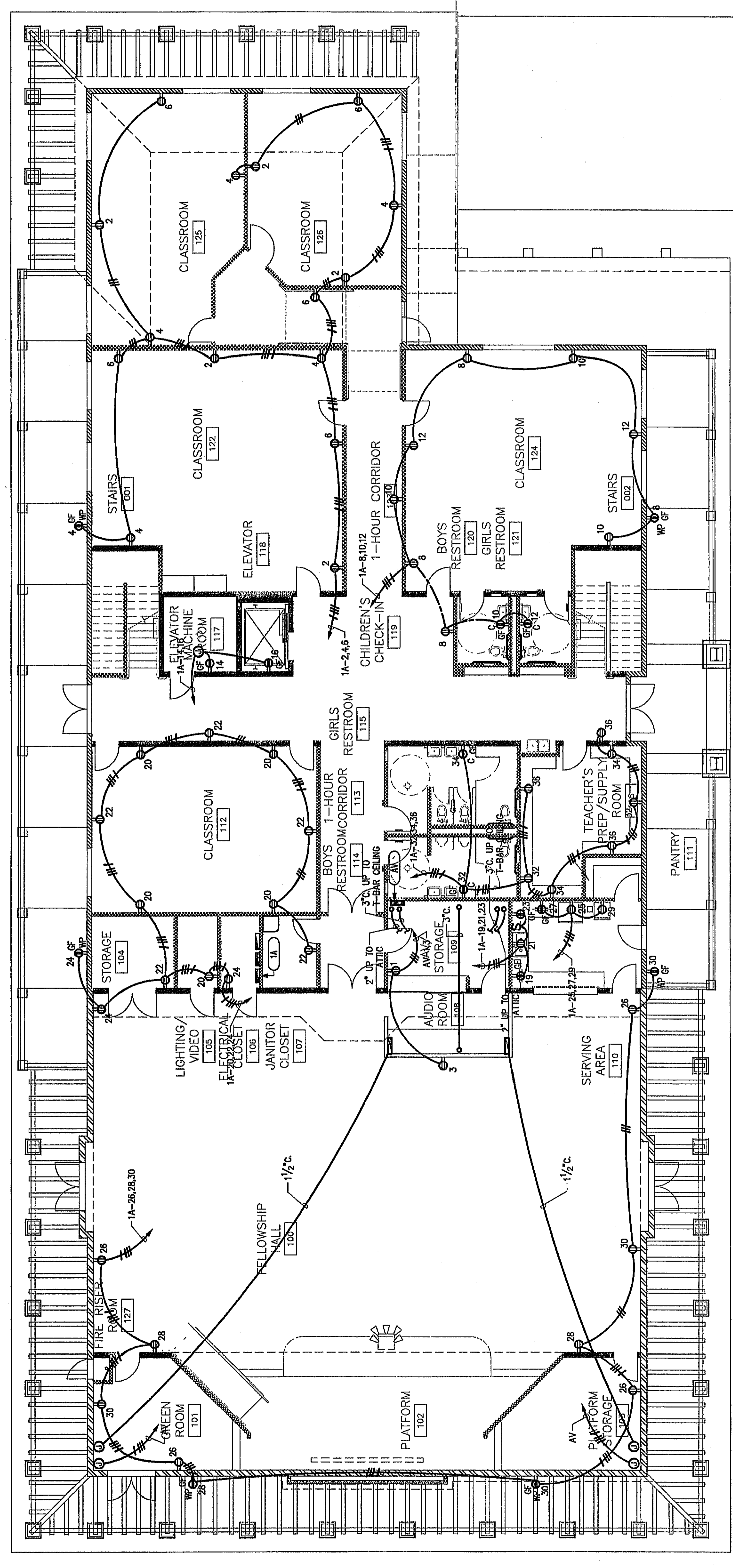
WEISBERG FROM  
4/28/07  
REVISIONS

TITLE  
**FIRST FLOOR  
LIGHTING/POWER PLAN**

SCALE 1/8"=1'-0"  
DATE 02.09.07  
JOB NO. 9888

E3.0

FIRST FLOOR POWER PLAN 1/8"=1'-0" 1



FIRST FLOOR LIGHTING PLAN 1/8"=1'-0" 2

