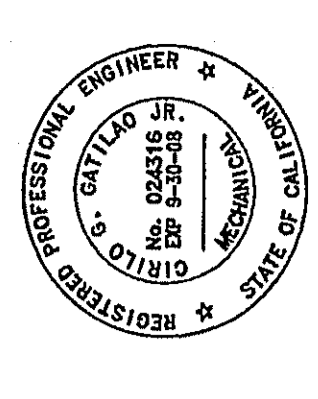
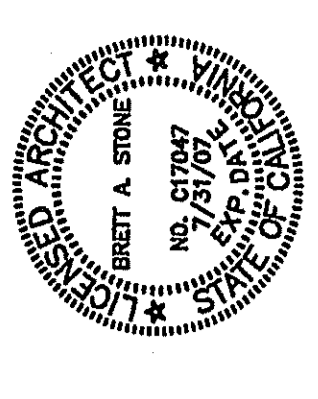


TOVEY SHULTZ CONSTRUCTION INC.  
18281 COLLIER AVE. SUITE "A"  
LAKE ELSINORE, CA 92530  
TEL: (951) 261-5777  
FAX: (951) 261-5527

DESIGN/BUILD

CONSULTANT

**Brian R. Bloom**  
Architect  
380 S. Milliken Ave., Ste. G, Orange, CA 92668-2909  
(949) 992-7209 FAX: (949) 992-7509  
ARCHITECTURE AND PLANNING



**CEEG**  
CALIFORNIA ENGINEERING  
DESIGN GROUP, INC.  
2725 West Burbank Blvd.  
BURBANK, CA. 91505  
(818) 566-7755

PROJECT  
CALVARY CHAPEL  
OF THE HIGH DESERT  
14740 EUCLALYPTUS  
HESPERIA, CA  
92345

PROJECT  
FELLOWSHIP HALL

ISSUANCES

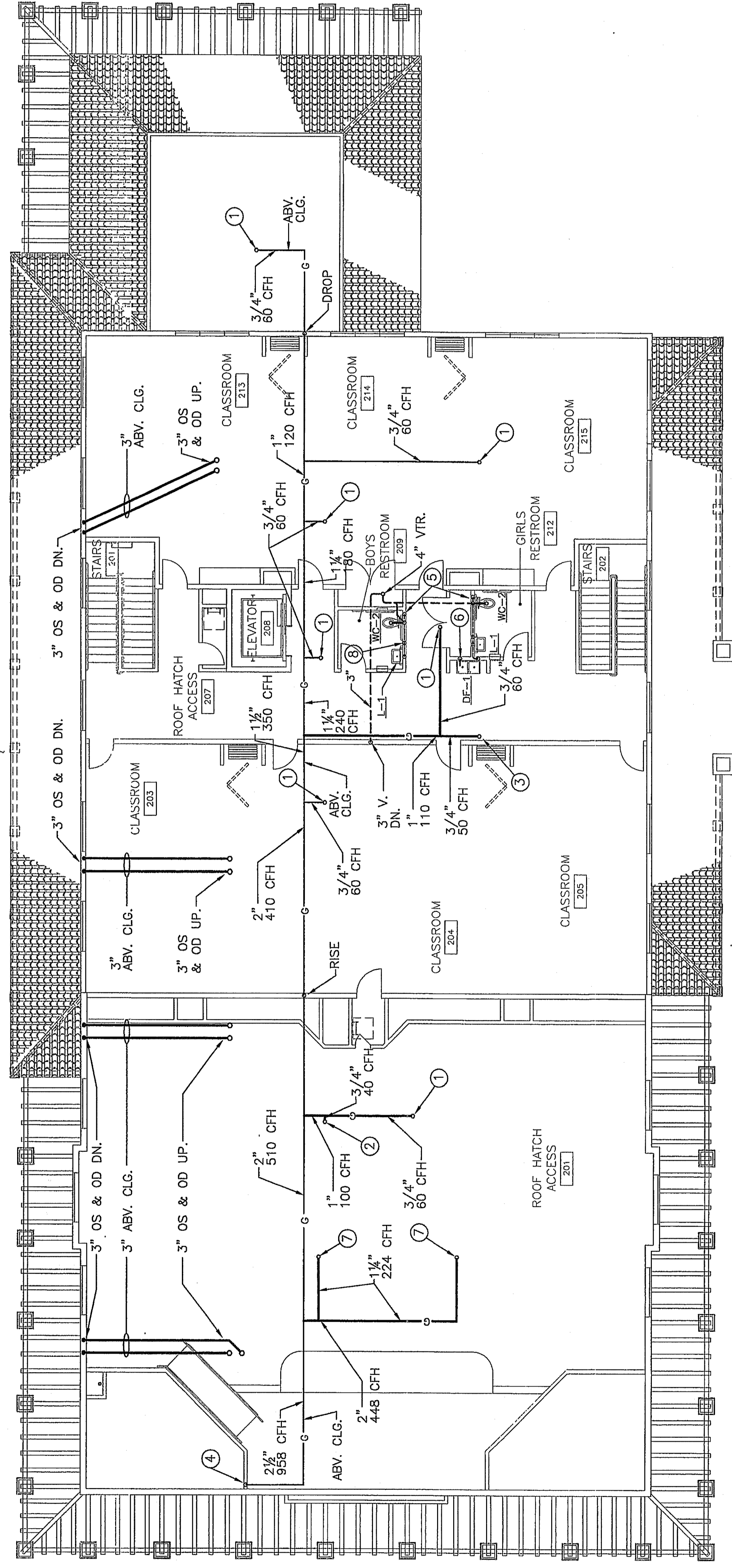
OWNERS MEETING	05-08-04
PLANNING REVIEW	06-01-06
PLANNING SUBMITTAL	01-31-07
FIRST PLAN CHECK	03-26-07

REVISIONS


WESSELER FROM  
3/0 2007  
RECEIVED

TITLE  
SECOND FLOOR  
PLUMBING PLAN

SCALE  
DATE 6-27-06  
JOB NO. 260106  
P-2.1



INSTALLATION NOTES:

- ① 3/4" G. UP, 60 CFH.
- ② 3/4" G. UP, 40 CFH.
- ③ 3/4" G. UP, 50 CFH.
- ④ 2 1/2" G. UP INTO CLG. FROM BEL. 958 CFH.
- ⑤ 1 1/4" CW. FROM BEL. 1" TO WC, 3/4" TO L-1, 1/2" TO WA-2, 1/2" HW TO LAV., 2" V. UP TO ABV. CLG.
- ⑥ 2" W. DN. 1 1/2" V. UP.
- ⑦ 1 1/4" G. UP, 224 CFH.
- ⑧ EG-1 W/ A.P. & TRAP PRIMER.

